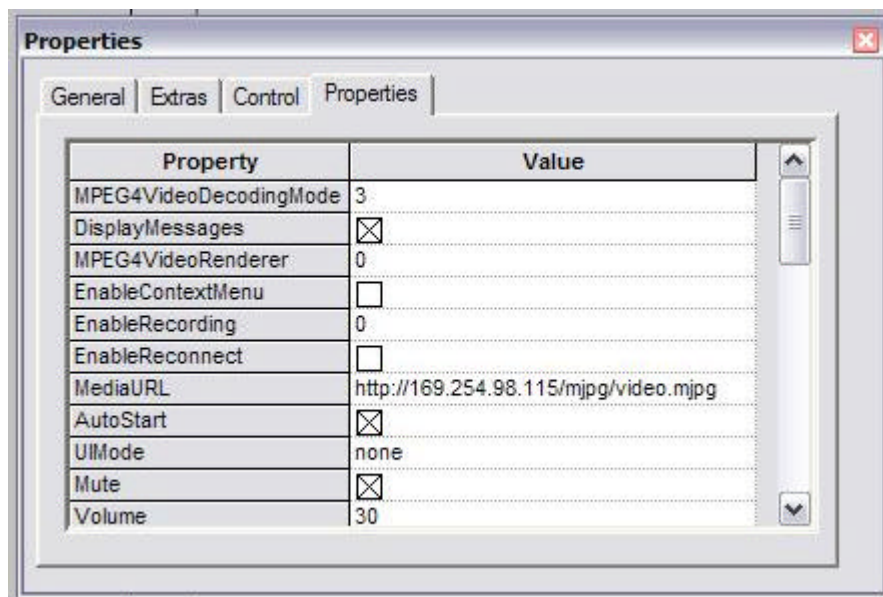


Hereby my experience with the new ActiveX control from Axis. The purpose is to visualise a video source on Elvis.

The connection to the server is easy and with the use of a small tool to detect the IP address and using this address, the server is accessible. To get the video signal on the screen, the server installs an active x component to use the video in a web browser. The next I did was to enable the server use without passwords.

The server I use is a 241S from Axis (only 1 channel video without sound), with the new Axis Media Control. ([http://www.axis.com/techsup/cam\\_servers/dev/activex.htm](http://www.axis.com/techsup/cam_servers/dev/activex.htm)). After installation I was able to put the control into Elvis (used library ..). Be aware the there are two classes (due of the web browser), AxisMediaControl Class is the one for Elvis.

After drawing the video box, you can use the properties listed in the box. The MediaURL is the one you need to connect the control with the server.



As you can see, there's a similarity with the older scripts. I did not test this with a camera but I assume that this is the same as the old script.

To prove that this control works, I've used a Sony 1080I HDTV recorder and use the color bar as signal. The Status bar, Button bar is also activated in de properties.

